

# ◀ HEALTH & SAFETY ALERT ▶

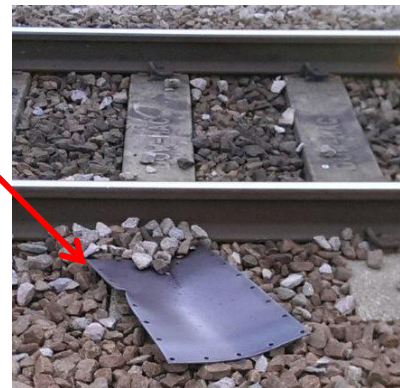


## Dangerous Occurrence – Temporary Power Supply



Photo showing similar transformer

Cover Plate



On the 3<sup>rd</sup> July 2013 a serious incident occurred during commissioning works to a replacement electrical transformer associated with the main electrical surface substation situated at Pudding Mill Lane site.

On completion of testing and checks to a 'Brush Model: 1250 kVA, 11,000/415v, Cooling Type KNAN'; as supplied by The Rutherford Group, the substation was energised to 11,000 Volts. Shortly afterwards an uncontrolled release of heated cooling fluid occurred and two personnel (one DSJV one Rutherford) suffered burns to face and arms – both being quickly transferred to A&E.

Following substation isolation by DSJV Electrical systems an initial check of the transformer identified that the inter connection chamber between the transformer main switch gear and transformer tank had sustained damaged during an internal build-up of pressure. The cover plate had sheared and was blown off and came to rest adjacent to the neighbouring NR tracks.

Commissioning works were being carried out in line with current electricity supply rules and regulations with permits and sanctions in line with current DSJV Electricity supply rules issued.

A technical investigation in conjunction with Rutherford and two independent experts is underway.

Thankfully the skin burns received are minor in nature and should have no long term affect to either individual

Further information will be provided on conclusion of the investigation.

