

RFT Performance Update

Work Starting without an ITP... (1) ACI Tower Structure commenced URS manufacture without a valid ITP...

Table with 4 columns: Contract, Network Cost (£m), Actual Cost (£m), % Network Cost

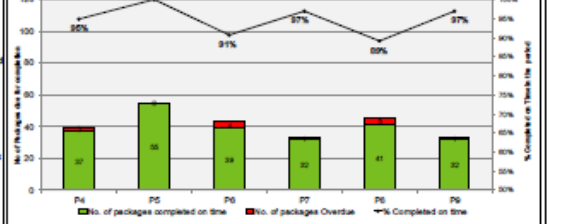
Other Performance Update... ECP completed and signed off on 27/11/2015...

Subcontractors... (1) Subcontractors were called out: C300(1), C410(1), C412(1), C423(1), C521(1), C523(1) and C910(1)...

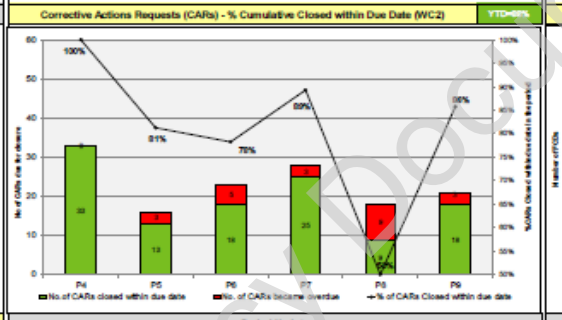
NCR Summary by Sector

Table with 4 columns: Sector, Contract, Number, Total

KEY PERFORMANCE INDICATORS



32 out of 53 packages achieved the '50 days Acceptance' TPI during PP of 2015/16... (Cumulatively 36/40/4 'Forecast for Acceptance' for 2015/16 - 92.3%).



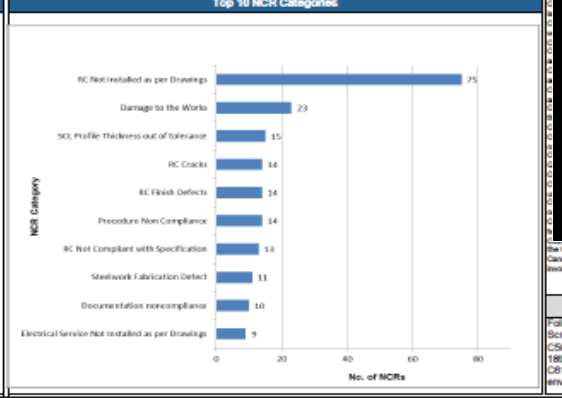
21 CARs were due this period and 18 CARs were closed on time, achieving 86% for this period.

Table with 4 columns: Contract, Period, Cat. 1 NCR No., OME £k, Description

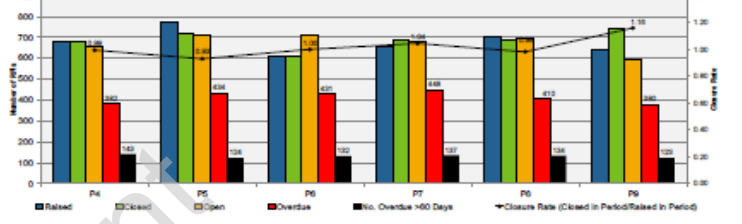
WLI Part 20 Clause 20.9 Defective Quality Management System Notices

There were no instances of a Clause 20.9 Notice this period.

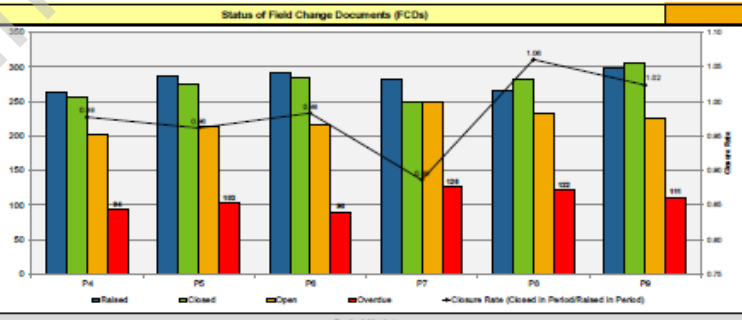
Top 10 MCR Categories



REQUEST FOR INFORMATION & FIELD CHANGE DOCUMENTS



The percentage of RFIs greater than 50 days overdue increased from 10% to 21% against a target of 10%.



The percentage of FCDs greater than 60 days overdue has stayed at 15% this period, against a target of 10%.

OVERALL PERFORMANCE SUMMARY

Key Accomplishments in the Period

The final 3 Spot-On roof cause analysis and problem solving training sessions took place completing the 30nc sessions for 2015.

Key Issues in the Period

Work started on ECP installation of the URS as supplied by ABB (Germany). The cranes are configured for top only cutting which in fact the NCR indicates as supplied as bottom entry.

Key Activities Planned for next Period

Follow-ups to the 3 lowest scoring contractors from Round 5 of the Performance Assurance Assessments will be completed on C550 (Woolwich), C651 (Platform Screen Doors) and C660 (Communications and Control Systems).