

# ◀ GOOD PRACTICE INFORMATION ▶



## 110-Volt Compression Fitting

### Problem:

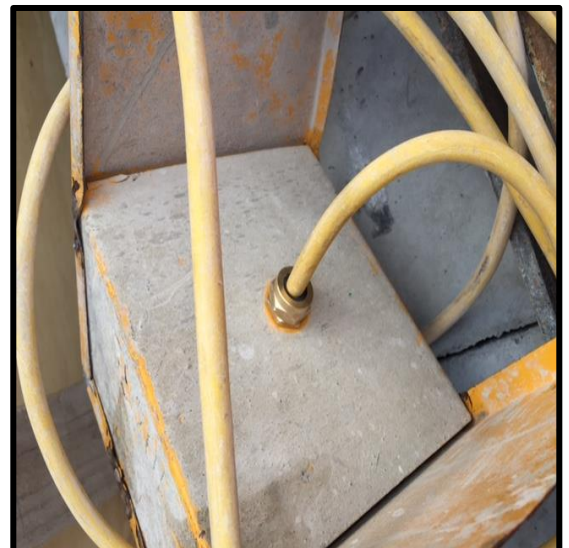
C360 (Mile End) employs the use of 110-volt spider boxes. As standard, these come fitted with plastic compression fittings; although they are inexpensive, they are not particularly robust or resistant to a construction environment.

### Solution:

The use of brass compression fittings to secure the cables to the spider box. They are compact, easy to fit and provide excellent sealing qualities.

### Advantages:

- Do not degrade over time, thus, doesn't require replacing.
- Do not become loose, therefore prevents live cables becoming exposed.
- Supports supplementary bonding resulting in a robust bond.



Underside of a 110-volt spider box with a brass compression fitting