

Completing the Elizabeth line

5 April 2023

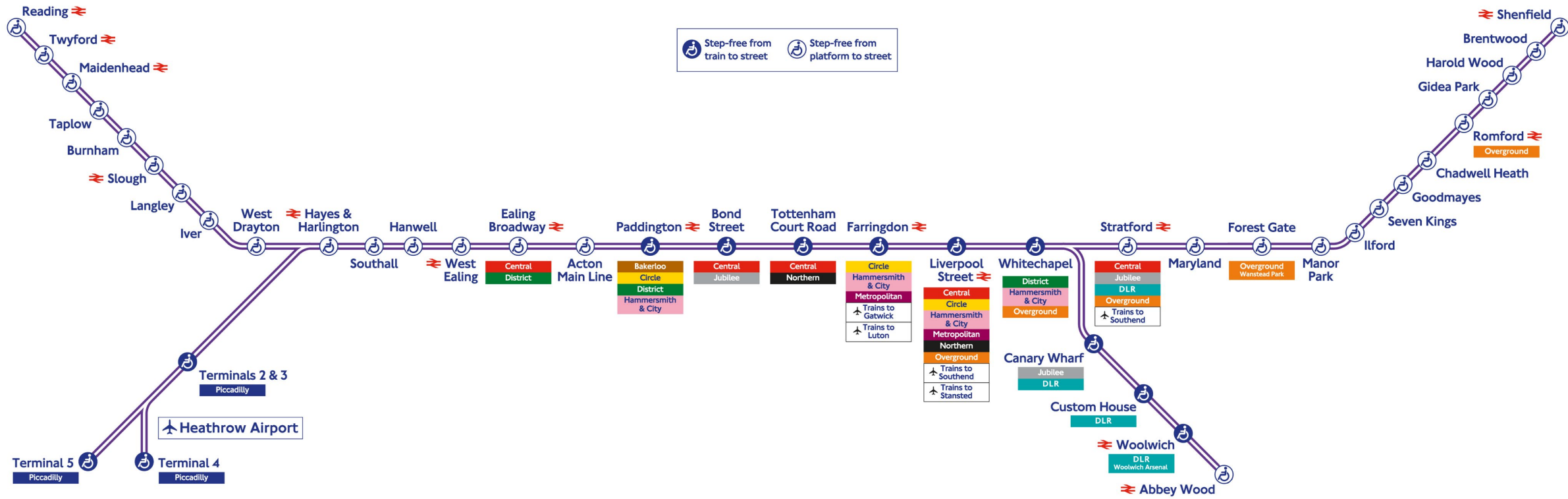


Opening & Operating the Elizabeth line

Howard Smith – Director, Elizabeth line



New infrastructure, new rules, new teams



1. Establish and maintain a consistent and coherent vision and specification of requirements based on operational outcomes and customer needs



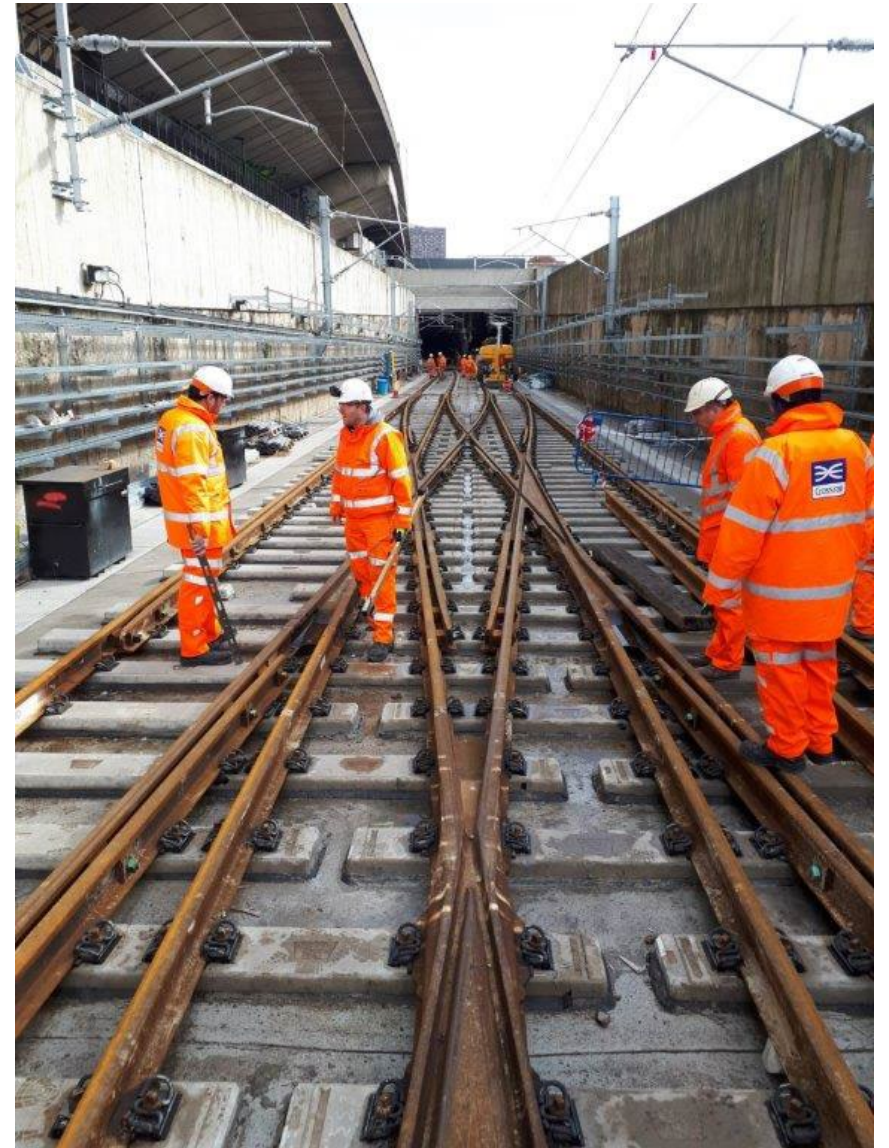
2. Relentlessly focus on the most important factors for customers and operational staff – ensuring the ‘product’ is safe and reliable



3. Learn from best practice



4. Have the right team



5. Ensure everyone has 'skin in the game' and can adapt – the Elizabeth line was a very complex project to bring into use



6. Ensure there is sufficient time and capacity to learn and familiarise prior to opening the railway to passenger use



7. Collaborate with delivery teams and lead the bringing-into-use phase



